

CCNA Cisco Certified Network Associate CCNA (v3.0)

Cisco 200-125 Dumps Available Here at:

<https://www.certification-questions.com/cisco-exam/200-125-dumps.html>

Enrolling now you will get access to 1034 questions in a unique set of 200-125 dumps

Question 1

In which two formats can the IPv6 address fd15:0db8:0000:0000:0700:0003:400F:572B be written? (Choose two.)

Options:

- A. fd15:0db8:0000:0000:700:3:400F:527B
- B. fd15::db8::700:3:400F:527B
- C. fd15:db8:0::700:3:4F:527B
- D. fd15:0db8::7:3:4F:527B
- E. fd15:db8::700:3:400F:572B

Answer: A, E

Question 2

What are three characteristics of the TCP protocol? (Choose three.)

Options:

- A. It uses a single SYN-ACK message to establish a connection.
- B. The connection is established before data is transmitted.
- C. It ensures that all data is transmitted and received by the remote device.
- D. It supports significantly higher transmission speeds than UDP.
- E. It requires applications to determine when data packets must be retransmitted.
- F. It uses separate SYN and ACK messages to establish a connection.

Answer: B, C, F

Question 3

DRAG DROP

Drag and drop the Ethernet terms from the left onto the correct descriptions on the right.

Select and Place:

carrier sense	use of CSMA to ensure that devices on a shared link can communicate without interfering with one another
collision	calculated value that can increase when a new station is added to a network
collision detection	ability of an end device to determine that another device is communicating on a shared link
collision rate	link used to transport data between a source and a destination
medium	potential conflict when more than one end device attempts to send traffic over the same link

Options:

A.

	collision detection
	collision rate
	carrier sense
	medium
	collision

Answer: A

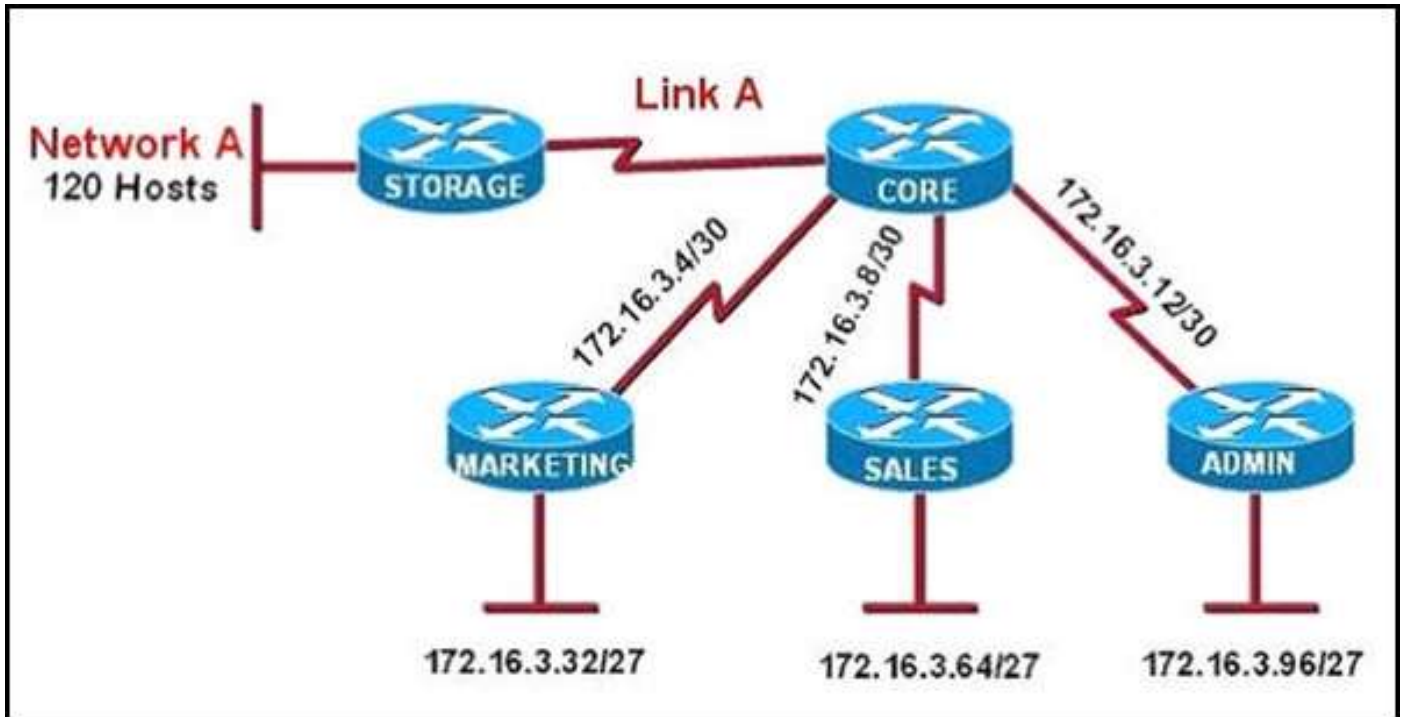
Explanation:

ork Fundamentals

Explanation:

Question 4

Refer to the exhibit.



All of the routers in the network are configured with the ip subnet-zero command. Which network addresses should be used for Link A and Network A? (Choose two.)

Options:

- A. Link A – 172.16.3.0/30
- B. Link A – 172.16.3.112/30
- C. Network A – 172.16.3.48/26
- D. Network A – 172.16.3.128/25
- E. Link A – 172.16.3.40/30
- F. Network A – 172.16.3.192/26

Answer: A, D

Question 5

Which type of device can be replaced by the use of subinterfaces for VLAN routing?

Options:

- A. Layer 2 bridge
- B. Layer 2 switch
- C. Layer 3 switch
- D. router

Answer: C

Question 6

What are two benefits of private IPv4 IP addresses? (Choose two.)

Options:

- A. They are routed to the Internet the same as public IP addresses.
- B. They are less costly than public IP addresses.
- C. They can be assigned to devices without Internet connections.
- D. They eliminate the necessity for NAT policies.
- E. They eliminate duplicate IP conflicts.

Answer: B, C

Question 7

Which two server types are used to support DNS lookup? (Choose two.)

Options:

- A. web server
- B. ESX host
- C. authoritative name server
- D. file transfer server
- E. name resolver

Answer: C, E

Question 8

Which three statements about IPv6 prefixes are true? (Choose three.)

Options:

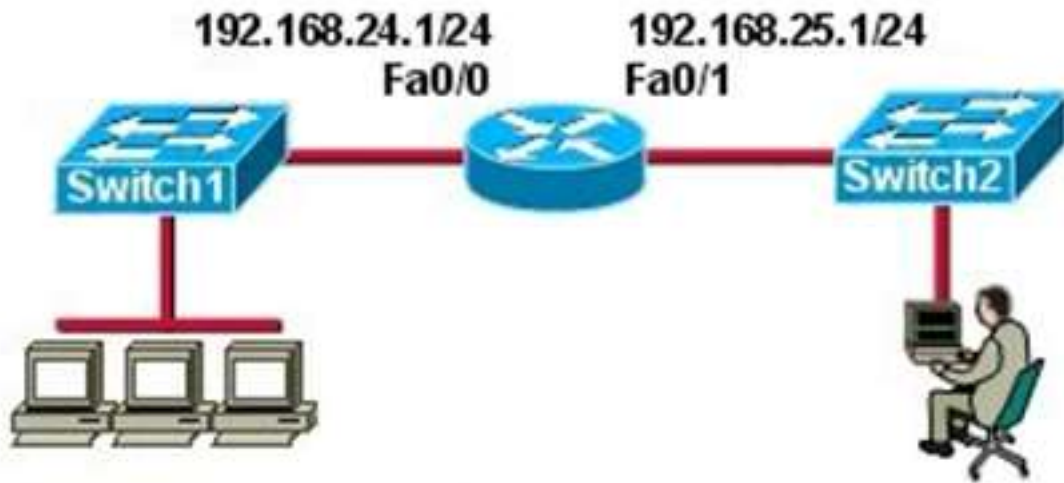
- A. FEC0::/10 is used for IPv6 broadcast.
- B. FC00::/7 is used in private networks.
- C. FE80::/8 is used for link-local unicast.
- D. FE80::/10 is used for link-local unicast.
- E. 2001::1/127 is used for loopback addresses.
- F. FF00::/8 is used for IPv6 multicast.

Answer: B, D, F

Question 9

Refer to the exhibit.





```
Switch1# show running-config
!
hostname Switch1
!
enable secret 5 $1$8V43Wm12DE8klwUjf8EcZnFT7/
enable password guess
!
<output omitted>
!
interface Vlan1
 ip address 192.168.24.2 255.255.255.0
 no ip route-cache
!
ip http server
!
line con 0
line vty 0 4
 password cisco
 login
!
end
```

The network administrator cannot connect to Switch 1 over a Telnet session, although the hosts attached to Switch1 can ping the interface Fa0/0 of the router. Given the information in the graphic and assuming that

the router and Switch2 are configured properly, which of the following commands should be issued on Switch1 to correct this problem?

Options:

A. Switch1(config)# ip default-gateway 192.168.24.1

B. Switch1(config)# interface fa0/1

Switch1(config-if)# switchport mode trunk

C. Switch1(config)# line con0

Switch1(config-line)# password cisco

Switch1(config-line)# login

D. Switch1(config)# interface fa0/1

Switch1(config-if)# ip address 192.168.24.3 255.255.255.0

E. Switch1(config)# interface fa0/1

Switch1(config-if)# duplex full

Switch1(config-if)# speed 100

Answer: A

Question 10

Which two statements about IPv6 and routing protocols are true? (Choose two.)

Options:

A. EIGRPv3 was developed to support IPv6 routing.

B. OSPFv3 was developed to support IPv6 routing.

C. Loopback addresses are used to form routing adjacencies.

D. EIGRP, OSPF, and BGP are the only routing protocols that support IPv6.

E. Link-local addresses are used to form routing adjacencies.

Answer: B, E

Would you like to see more? Don't miss our 200-125 PDF

file at:

<https://www.certification-questions.com/cisco-pdf/200-125-pdf.html>

